

HISTORY

1055 The first written record of Olomouc comes from 1055, about the city is much older. The legend speaks of the city founder Julius Caesar. Even its name could be based on Latin Juliomontium (or Juliomons), meaning "the hill of Julius".

1306 1306 is a year which every local pupil is taught. The last king of the Premyslid dynasty was killed by his brother on the stairs of the Dome (see Tourist Classic).

1573 225 years after the Charles University of Prague, the second oldest university of the Czech lands – Palacký University in Olomouc – was founded in 1573.

1642–1650 During the years 1642–1650 when Olomouc was defeated by the Swedes, only 1675 out of 30 000 citizens survived, and 1198 out of 1356 houses were destroyed. The city lost its status as the capital town of Moravia, while the state offices and the court moved to the new capital: Brno.

1767 The 6th symphony F-Dur was composed in Olomouc by an eleven year old W. A. Mozart when he was recovering from smallpox here at the archbishopric between October and December 1767 (Arcidiecézní museum: see spot A in Tourist classic walk).

1797 Lafayette, a key figure in the French Revolution and soldier for the United States in the American Revolutionary War, was released from our city prison in 1797.

1905 The first human organ transplant in the world was carried out in Olomouc's hospital in 1905. Austrian surgeon Eduard Zirm transplanted an eye cornea into a patient.

1971 Olomouc became an official protected historical site, the 2nd oldest and largest after Prague, in 1971.



PRACTICAL INFO

BUDGET LUNCH MENU

If you're like us, you like to go out for a lunch between 11.00 and 14.00. A budget lunch menu (soup+main dish) is offered in almost every restaurant or pub and prices are very reasonable, usually ranging from 90 to 130 CZK.

PUBLIC TRANSPORT

You can buy a ticket for all public transport from the yellow machines spread all around the city. You will pay 14 CZK for an adult ticket. Or, if you're an ISIC card holder, we recommend you buy the 24h ticket, which costs only 23 CZK. If you buy it from a tram or bus driver, but there is usually a 6 CZK surcharge.

LUGGAGE STORAGE

You can store your luggage 24/7 at the train station or if in the city centre, you can go to the infocentre in the town hall. Storage here available from June to September 9–18, at 30 CZK/4 hours).

BIKE LOVERS

Locals love cycling around the city and the proof is that Olomouc is the 2nd best cycling city in the Czech Republic. If you want to borrow a bike, use bikesharing of pink bikes called Rekola (www.rekola.cz/en/how-it-works). You can borrow the bike as one-off when the first 15 minutes are for free, next 45 minutes are for 12 CZK and each next 15 minutes for 4 CZK.

TIPS

We usually leave around 10 % of the bill as a tip in cafés, pubs and restaurants, depending on how satisfied we were with services and food. Tips aren't automatically included in the price.

OPENING TIMES

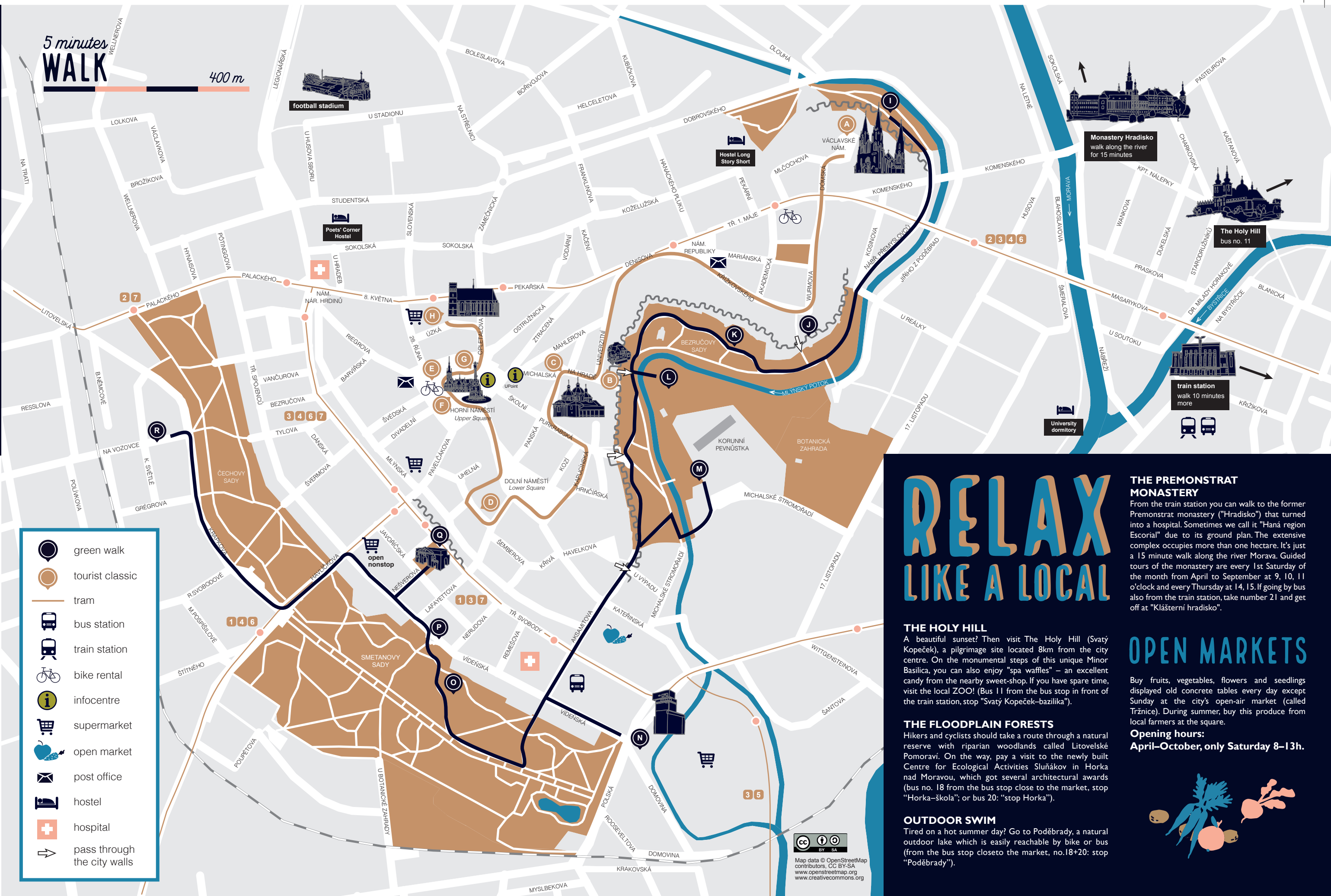
Most of the large supermarkets are open from 7.00 to 20.00. At weekends they usually open one hour later and close around 20. Smaller shops (called potraviny) usually close at 18.00 during working days and at 13.00 on Saturdays. A small shop (called Večeřka) in Havlíčkova street is open non-stop.

WHAT'S UP TONIGHT?

What's going on tonight? Get some inspiration from the cultural programme: www.olomouc.cz/akce-kalendar/. Unfortunately, it's only in Czech, but give it a try! Ask for details in the infocentre daily from 9.00 to 19.00.

ACCOMMODATION

If you are looking for an unforgettable experience, stay at new modern design Long Story Short Hostel & Café (Koželušská 31, www.longstoryshort.cz). In case they are fully booked you can stay at the hostel which is situated at the university campus area (Šmeralova 12, call +420 777 000 202 or 585 638 175).



RELAX LIKE A LOCAL

THE HOLY HILL

A beautiful sunset? Then visit The Holy Hill (Svatý Kopeček), a pilgrimage site located 8km from the city centre. On the monumental steps of this unique Minor Basilica, you can also enjoy "spa waffles" – an excellent candy from the nearby sweet-shop. If you have spare time, visit the local ZOO! (Bus 11 from the bus stop in front of the train station, stop "Svatý Kopeček-bazilika").

THE FLOODPLAIN FORESTS

Hikers and cyclists should take a route through a natural reserve with riparian woodlands called Litovelské Pomoraví. On the way, pay a visit to the newly built Centre for Ecological Activities Slunákov in Horka nad Moravou, which got several architectural awards (bus no. 18 from the bus stop close to the market, stop "Horka-škola", or bus 20: "stop Horka").

OUTDOOR SWIM

Tired on a hot summer day? Go to Poděbrady, a natural outdoor lake which is easily reachable by bike or bus (from the bus stop close to the market, no. 18+20: stop "Poděbrady").

THE PREMONSTRAT MONASTERY

From the train station you can walk to the former Premonstrat monastery ("Hradisko") that turned into a hospital. Sometimes we call it "Hana region Escorial" due to its ground plan. The extensive complex occupies more than one hectare. It's just a 15 minute walk along the river Morava. Guided tours of the monastery are every 1st Saturday of the month from April to September at 9, 10, 11 o'clock and every Thursday at 14, 15. If going by bus also from the train station, take number 21 and get off at "Klášteří hradisko".

OPEN MARKETS

Buy fruits, vegetables, flowers and seedlings displayed old concrete tables every day except Sunday at the city's open-air market (called Tržnice). During summer, buy this produce from local farmers at the square.

Opening hours:

April–October, only Saturday 8–13h.



TOURIST CLASSIC

A ST. WENCESLAS SQUARE

You can't forget to have a look at the magnificent neogothic cathedral on the square. Nicknamed "Dóm" by the locals, at 100 m it's the second highest church tower in the Czech Republic. However, not many locals have ever ventured up there! The surroundings are actually the oldest part of the city. Look for a retro postcard in the infocentre showing it in Renaissance times.

B VIENNESE ART NOUVEAU

Don't just pass through the high white walls in the narrow streets, but step inside to see the colourful Art Nouveau entrance to the Gallery of Villa Primavasi adorned with the paintings of Gustav Klimt (open Tue–Fri 8.30–12.30, 13.00–17.00, Sat 8.30–12.30). If you're not fond of art, visit the garden for free and have a look from the walls down into the "Bezručovy sady" park.

C ST. MICHAEL'S SQUARE

After climbing the highest hill in the area, you'll find the Baroque Church of St. Michael, with its three characteristic cupolas. Don't miss the tower which is open to the public all year round from dawn to dusk. From there look down on a photogenic street that sweeps down to the square. When you enter the church, look into the small cave chapel with its water feature. Free entrance.

D STREET WHICH COMES ALIVE

While at the Lower Square you can enter a passage which used to have up to 40 butcher's stalls. Its basin was deep enough to supply two fountains on the Lower Square. You can get a glimpse of it under the glass lid on the floor. Remember to come again in the evening! Uhelná Street is the place to go for a night in the town. Enter any one of its small pubs and then jump from one to the next.

E THE UNESCO COLUMN

When you finally reach the main square, you'll find the column of the Holy Trinity. It has always been a source of pride for us. During the war years there were attempts to conserve and hide it in a museum. It's one of our favourite meeting places, where we sit around on the stairs, warmed by the sun. Try to count 52 different sculptures on this 35 m high column.

F THE TOWN HALL

Next, you'll come to the Town Hall which is still a place of municipal government. If you're cheeky, you can pop inside during office hours (8–15.30) to check out the beautiful gothic arches and an exhibition about the previous old Astronomical clock on the second floor. From 15th June until the end of September, it's worth a climb up the tower. Ask in the infocentre for a guided tour for 30 CZK per person.

G THE COMMUNIST LINKAGE

Don't think the Astronomical clock on the facade of the Town Hall is broken when it doesn't play every hour. It comes alive only once a day at noon with three regional songs. It was made in the 1950's and has been at the centre of a discussion since the velvet revolution against the communist regime in 1989, concerning whether it should be changed back to the previous version. If you miss the clock, at least try to spy its lowest ring with names and birthdays of Stalin, for example.

H THE GOTHIC TOWER

Compared to Dóm, the Church of Saint Moritz is the real late Gothic art piece hiding behind the square. From the west side you can climb the tower and even get a little headache after going up the swirling staircase. Remember to donate a coin at the entrance (not less than 20 CZK) and leave the tower in time, otherwise you might be locked in! Opening hours change throughout the year and according to the weather; in summer it's usually 9–18.

GREEN WALK

I PARK NEARBY THE "DÓM"

Take a chill-out walk in the Olomouc green belt. You'll pass a historical fortification with a medieval city gate. It's located below the cathedral and only a few people usually pass that way, so you may find it quite peaceful.

J TERRACE GARDENS

Keep following the water and slip into the hidden green courtyards of the university quarters. These are the gardens at the terraces of the former town walls, and are maintained by Palacký University. Sometimes devious students throw books out of the library windows to the gardens to avoid checking them out. Open daily from April till October 7–19.

K PARK WITHIN THE CITY WALLS

Now you're in Bezručovy sady, an English-style park with daffodils, blooming during spring. You might see students climbing the walls or playing African drums. In the middle park, make a stop at the Neoclassical soldier mausoleum from World War I. If you follow the wall, you'll find four entrances up the walls, connecting the park with the University or the city centre.

L BOTANICAL GARDEN

If you need to rest for a while or want to treat your senses, visit the botanical garden. It was designed for visually impaired people so you can learn to identify trees by touching their trunks. A garden of senses and a recently renovated rosarium. You must not miss this! (Apr–Oct, Tue–Sun 9.30–18).

M BASTION FORTIFICATION

Just behind the wall lies Korunní pevnůstka, one of a few surviving fortifications which used to be a part of the original bastion. Along with the surrounding bastions, it created a line of defense for the city fortress. Now, there's a museum Pevnost poznání, no. 35 in our map.

N TRANSFORMED ARCHITECTURE

When you leave the park, something cube-shaped appears in the skyline before you. It's a modern concrete family house built in 2006 on the top of a 1943 abandoned grain silo. Instead of bulk storage, it transformed into a functional, livable building! The space under the villa itself is empty (approximately 20 m) except for an elevator. Unfortunately, it's a private house, so you can't enter.

O PARK FLORA

Slip into Smetanovy sady, another large park named after our great composer. It was founded in the place of the former city fortification 195 years ago. The main promenade with flowers is a popular place among locals who make it lively all day. Also great for having a picnic under the tree shadows. Don't get confused when meeting a peacock family, they live here too!

P NEIGHBOURHOOD OF OLD VILLAS

Turn to the side entrance through a gate of the Theresian fortification. Wander around Videšská street to feel the unique atmosphere of majestic Art-nouveau villas and peak into their picturesque gardens.

Q PREVIOUS WEST ENTRANCE

The Theresian Gate is named after the empress Maria Theresa who once visited this city. In the middle of the gate, there is a wide arched passageway with two lower passages for pedestrians on both sides. A river used to flow behind, nowadays it goes through an underground pipeline.

R FAMILY VILLAS

You might still have some extra energy to wander in the streets Na Vozovce, Polívkova, Resslerova and Mozartova (keep the north-west direction) where there are masterpieces of family villas, dating back to Art-nouveau at Resslerova 20 (1911), cubism at Na Vozovce 21 (1925) or functionalism at Polívkova 35 (1936).

URBAN LEGEND

THE PRUSSIAN CANNONBALLS

The siege by Prussians in the 18th century left the city devastated and even now artillery balls can be found on some facades. The houses were repaired, artillery cannonballs removed and relocated, but their traces remain to remind us of the suffering of the war even after victory.

THE ARION FOUNTAIN

It's different from those baroque ones, but originally was planned to be built at the same time as the others. Notice the famous Greek poet and singer Arion, who was saved by a dolphin attracted by his song. This event was given as an example of corrected injustice and rescue from perdition, which locals felt after the Thirty Years' War in the first half of the 17th century.

HISTORICAL JOKE

If you toss a coin from a tower of the Town Hall, it would probably hit a student these days. But in the 19th century it was different. An old joke says that the coin could hit a monk, a soldier or a student!

PUZZLE IN THE PAVEMENT

Have you noticed the golden stripes in the pavement in the square and wondered about their purpose? They highlight the direction of the old streets before reconstruction. You might find a silhouette of a church or even an execution place if you look closely.

PART OF THE HISTORIC GENIUS LOCI

Notice the black horse on a facade of one of the houses on the Lower Square. It's one of the house signs, which have been a part of local history since the Middle Ages. Their main function was to facilitate orientation in the city and tell something about the house itself. In fact, there's quite a charming legend about the horse fallen in love with a young housemaid. Ask a local to tell you the whole story!

CLIMB FOR YOUR GRADUATION

Have you noticed the hollow in the column on the Lower Square? Are you small enough to pass through or not? If you wanna try as others did before, be prepared for the police arriving to stop you before you finish the challenge. If you have enough money to pay the fine and patience to discuss it, you can be reassured that you'll finish your studies successfully—that's why the locals keep the tradition and take this challenge again and again every year.



HOW TO GET THERE?

After two hours and half in a train from Prague, now travel by foot through the city and keep the north-west direction. Follow the tram track (even numbers) in



USE-IT PRAGUE INFOCENTRE

Free maps of over 35 other European cities! Let us help you with planning your next step when travelling both in the Czech Republic or abroad. Free Czech USE-IT maps, free local smile, free advice... Come to grab a coffee and chat!

Where? Trojanova 3, Praha 2
When? Every Wednesday 14–17
But before you come or if you come in a summer season - check our website or Fb page
Check our website or FB page:
facebook.com/use.it.prague
facebook.com/useitolomouc

SEND US FEEDBACK

Let us know what we could do better.

facebook.com/useitolomouc

Make us happy and take a picture with the map on Instagram.

#useitolomouc

